

107, Belle Vue Road, Belle Vue, Shrewsbury, SY3 7NJ
£1,200 Per Month



107, Belle Vue Road, Belle Vue, Shrewsbury, SY3 7NJ

£1,200 Per Month

VIRTUAL TOUR AVAILABLE - This very attractive 3 storey Victorian house has been recently modernised to a high standard, whilst being located in a great position just a short walk from Coleham and Shrewsbury town centre with the added advantage of a fantastic rear garden.

Available: 02/06/25

Description

Comprising: Open plan living/dining room/kitchen, 3 bedrooms, shower room, large rear garden, double glazed windows, gas fired central heating. Single lockable garage and parking for one vehicle. EPC D



Unfurnished

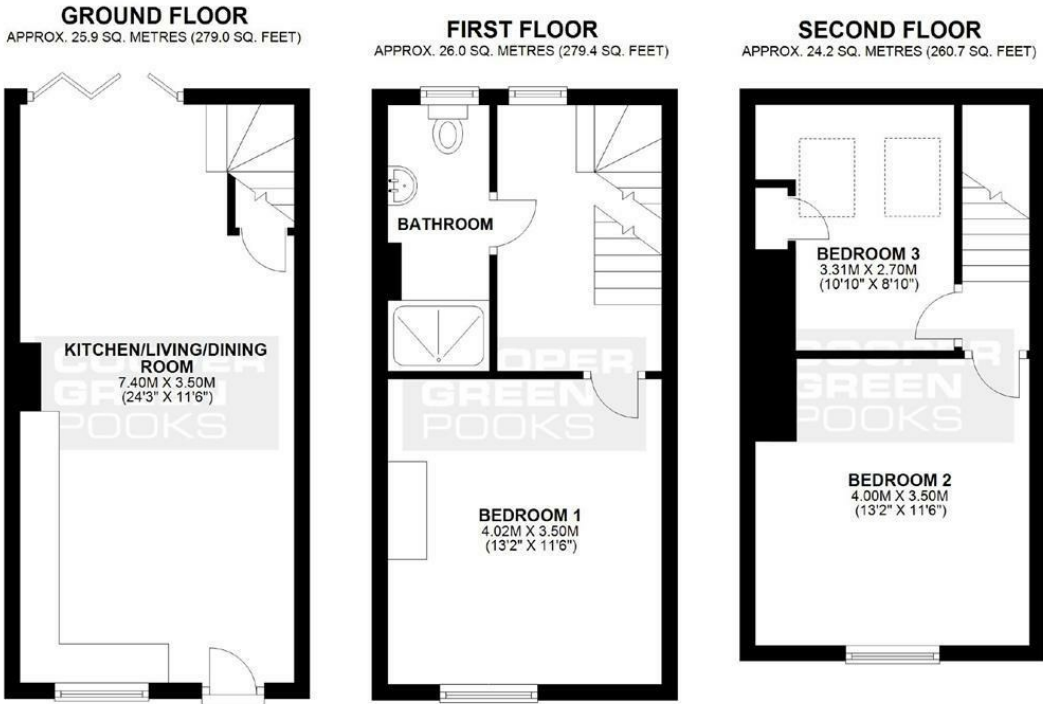
Council Tax Band: A

Available: 2nd June 2025

EPC: D



Floor Plans



TOTAL AREA: APPROX. 76.1 SQ. METRES (819.1 SQ. FEET)

We accept no responsibility for any mistake or inaccuracy contained within the floorplan. The floorplan is provided as a guide only and should be taken as an illustration only. The measurements, contents and positioning are approximations only and provided as a guidance tool and not an exact replication of the property. Plan produced using PlanUp.

These particulars, whilst believed to be accurate are set out as a general outline only for guidance and do not constitute any part of an offer or contract. Intending purchasers should not rely on them as statements of representation of fact, but must satisfy themselves by inspection or otherwise as to their accuracy. No person in this firms employment has the authority to make or give any representation or warranty in respect of the property.